

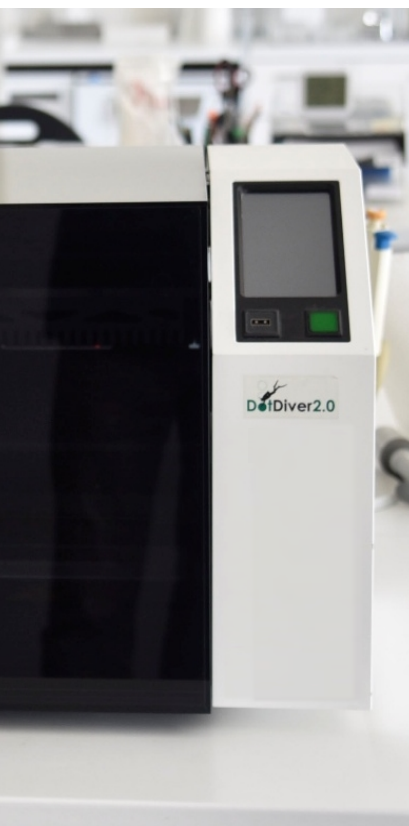
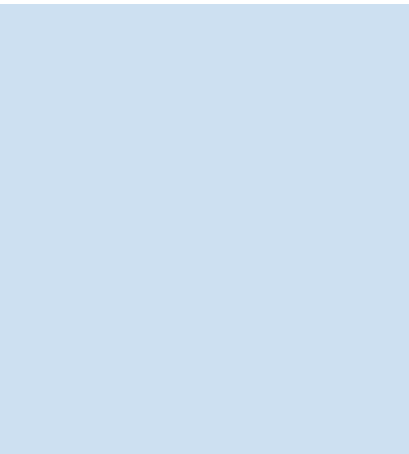
PRODUCT CATALOG 2026



+130 Products

PREMIUM QUALITÄT

MADE IN GERMANY



Company Profile



Dear customer and partner,

We, Medipan GmbH & GA Generic Assays GmbH (Germany), are market-leading companies in the development, manufacturing, and marketing of *in vitro* diagnostic (IVD) assays and instruments.

Together, we have extensive experience in tissue and cell-based IFA, ELISA, RIA, and immunoblot assays for the diagnosis of rheumatic and other autoimmune diseases of neurological, vascular, hepatic, renal, or gastrointestinal origin.

As a growing company in the diagnostics market, we are looking for innovative research and distribution partners worldwide to strengthen our existing network of partners and customers.

With kind regards,

A handwritten signature in blue ink, appearing to read 'Dirk Roggenbuck'. The signature is stylized and fluid.

Prof. Dr. Dirk Roggenbuck

CEO of Medipan & GA Generic Assays

Table of Content

| | |
|--|----|
| Company Profile | 1 |
| ELISA | 6 |
| Endocrinology | 6 |
| Gastroenterology | 7 |
| Hepatology..... | 8 |
| Nephrology | 8 |
| Rheumatology..... | 8 |
| <i>Anti-Phospholipid Syndrome</i> | 8 |
| <i>Connective Tissue Diseases</i> | 9 |
| <i>Rheumatoid and Juvenile Arthritis</i> | 9 |
| <i>Systemic Lupus Erythematosus</i> | 9 |
| <i>Vasculitis</i> | 10 |
| LINE & Dot | 11 |
| Automated assays for DotDiver2.0..... | 11 |
| Gastroenterology | 11 |
| Hepatology..... | 11 |
| Neurology | 12 |
| Rheumatology..... | 12 |
| <i>Anti-Phospholipid Syndrome</i> | 12 |
| <i>Connective Tissue Diseases</i> | 12 |
| <i>Vasculitis</i> | 13 |
| Manual Assays | 14 |
| Gastroenterology | 14 |
| Hepatology..... | 14 |
| Neurology | 14 |
| Rheumatology..... | 15 |
| <i>Anti-Phospholipid Syndrome</i> | 15 |
| <i>Connective Tissue Diseases</i> | 15 |
| <i>Vasculitis</i> | 15 |
| RIA | 16 |
| Endocrinology | 16 |
| Tumor Makers..... | 17 |
| IFA..... | 18 |
| Manual Assays | 18 |

| | |
|---|----|
| Dermatology | 18 |
| Gastroenterology | 18 |
| Hepatology..... | 19 |
| Neurology | 19 |
| Rheumatology..... | 19 |
| <i>Connective Tissue Diseases</i> | 19 |
| <i>Systemic Lupus Erythematosus</i> | 20 |
| <i>Vasculitis</i> | 20 |
| <i>Automated Assays</i> | 21 |
| Dermatology | 21 |
| Gastroenterology | 21 |
| Hepatology..... | 22 |
| Nephrology | 22 |
| Rheumatology..... | 22 |
| <i>Connective Tissue Diseases</i> | 22 |
| <i>Systemic Lupus Erythematosus</i> | 23 |
| <i>Vasculitis</i> | 23 |
| <i>Rapid Tests</i> | 24 |
| <i>Lateral Flow</i> | 24 |
| Infectiology..... | 24 |
| Gastroenterology | 24 |
| <i>Latex Tests</i> | 25 |
| <i>IFA Platform Technology</i> | 26 |
| <i>Reading System</i> | 26 |
| akiron® NEO | 26 |
| <i>Pipettor</i> | 27 |
| AP16 IF ELITE..... | 27 |
| <i>Blot Automation</i> | 28 |
| DotDiver2.0..... | 28 |
| <i>Blot Scanning Software</i> | 29 |
| Blot GALaxy | 29 |
| <i>Index</i> | 30 |



*All products are CE-marked,
unless otherwise stated.*

ELISA



Endocrinology

| REF | PRODUCT | DESCRIPTION | DETERMINATIONS |
|------|-----------------------------|---|--|
| 3002 | Medizym® anti-TPO | quantitative determination of IgG antibodies against thyroid peroxidase (TPO) in human serum [microtiter plate coated with recombinant human TPO] | 96 (90 + C) 105 min / 100 µL of 1:100 dil. |
| 3102 | Medizym® anti-Tg | quantitative determination of IgG antibodies against thyroglobulin (Tg) in human serum [microtiter plate coated with highly purified human Tg] | 96 (90 + C) 105 min / 100 µL of 1:100 dil. |
| 3505 | Medizym® T.R.A. human | quantitative determination of antibodies against TSH receptor in human serum [microtiter plate coated with TSH receptor (human)] | 96 (90 + C) 180 min / 100 µL |
| 3506 | Medizym® anti-IA2 M | quantitative determination of antibodies against protein tyrosine phosphatase (IA2) in human serum [microtiter plate coated with IA2 (human recombinant)] | 96 (90 + C) 160 min / 50 µL |
| 3507 | Medizym® anti-GAD M | quantitative determination of antibodies against glutamic acid decarboxylase (GAD65) in human serum [microtiter plate coated with GAD65 (human recombinant)] | 96 (89 + C) 160 min / 50 µL |
| 3806 | Medizym® IAA | quantitative determination of IgG antibodies against insulin in human serum [microtiter plate coated with human recombinant insulin] | 96 (89 + C) 105 min / 100 µL of 1:100 dil. |

Gastroenterology

| REF | PRODUCT | DESCRIPTION | DETERMINATIONS |
|--------------------|-----------------------------|--|--|
| 3600 | Anti-Intrinsic Factor | quantitative determination of IgG antibodies against intrinsic factor in human serum [microtiter plate coated with intrinsic factor] | 96 (89 + C) 105 min / 100 µL of 1:100 dil. |
| 3610 | Anti-GPC | quantitative determination of IgG antibodies against gastric parietal cells in human serum [microtiter plate coated with H ⁺ /K ⁺ ATPase (α und β subunit)] | 96 (89 + C) 105 min / 100 µL of 1:100 dil. |
| NEW 3650 | Anti-GP2 Iso 1 IgA | of IgA antibodies against glycoprotein 2 (GP2) isoform 1 in human serum [microtiter plate coated with recombinant human glycoprotein 2 isoform 1] | 96 (89 + C) 105 min / 100 µL of 1:100 dil. |
| 3710 | GliaDea IgA | quantitative determination of IgA antibodies against deamidated gliadin in human serum [microtiter plate coated with deamidated gliadin] | 96 (89 + C) 105 min / 100 µL of 1:100 dil. |
| 3750 | Anti-GP2 IgA | quantitative determination of IgA antibodies against glycoprotein 2 (GP2) in human serum [microtiter plate coated with GP2] | 96 (89 + C) 105 min / 100 µL of 1:100 dil. |
| 3810 | GliaDea IgG | quantitative determination of IgG antibodies against deamidated gliadin in human serum [microtiter plate coated with deamidated gliadin] | 96 (89 + C) 105 min / 100 µL of 1:100 dil. |
| 3850 | Anti-GP2 IgG | quantitative determination of IgG antibodies against glycoprotein 2 (GP2) in human serum [microtiter plate coated with GP2] | 96 (89 + C) 105 min / 100 µL of 1:100 dil. |
| 3950 | Pancreatitis GP2 | quantitative determination of glycoprotein 2 (GP2) in human serum [microtiter plate coated with anti-GP2] | 96 (90 + C) 105 min / 100 µL |
| 4006 | ASCA IgA | quantitative determination of IgA antibodies against <i>Saccharomyces cerevisiae</i> mannan (ASCA) in human serum [microtiter plate coated with mannan of <i>Saccharomyces cerevisiae</i>] | 96 (89 + C) 105 min / 100 µL of 1:100 dil. |
| 4007 | ASCA IgG | quantitative determination of IgG antibodies against <i>Saccharomyces cerevisiae</i> mannan (ASCA) in human serum [microtiter plate coated with mannan of <i>Saccharomyces cerevisiae</i>] | 96 (89 + C) 105 min / 100 µL of 1:100 dil. |
| 4033 | Anti-huTransG | quantitative determination of IgA antibodies against tissue transglutaminase in human serum [microtiter plate coated with tissue transglutaminase and gliadin traces] | 96 (89 + C) 105 min / 100 µL of 1:100 dil. |
| 4044 | Anti-hu tTG IgG | quantitative determination of IgG antibodies against tissue transglutaminase in human serum [microtiter plate coated with tissue transglutaminase and gliadin traces] | 96 (89 + C) 105 min / 100 µL of 1:100 dil. |
| 6012 6013 | Helicobacter pylori Antigen | qualitative determination of <i>Helicobacter pylori</i> antigen in fecal samples [microtiter plate coated with anti- <i>Helicobacter pylori</i> antibodies] | 48 (45 + C) / 96 (93 + C) 75 min / 50 µl of 1:20 dil. |

ELISA

LINE & Dot

RIA

IFA

Rapid Test

IFA Automation

Blot Automation

Blot Software

Hepatology

| REF | PRODUCT | DESCRIPTION | DETERMINATIONS |
|------|------------|--|--|
| 3900 | Anti-ASGPR | semi-quantitative determination of IgG antibodies against asialoglycoprotein receptor (ASGPR) in human serum [microtiter plate coated with ASGPR] | 96 (93 + C) 105 min / 100 µL of 1:100 dil. |
| 4052 | Anti-M2 | quantitative determination of IgG antibodies against mitochondrial antigen M2 in human serum [microtiter plate coated with M2 antigen (PDC-E2, OGDC-E2, and BCOADC-E2)] | 96 (89 + C) 105 min / 100 µL of 1:100 dil. |
| 4053 | Anti-LKM-1 | quantitative determination of IgG antibodies against cytochrome p450 IID6 in human serum [microtiter plate coated with LKM-1 (cytochrome P450 IID6)] | 96 (89 + C) 105 min / 100 µL of 1:100 dil. |

Nephrology

| REF | PRODUCT | DESCRIPTION | DETERMINATIONS |
|------|---------------|---|--|
| 4067 | Anti-Faktor H | quantitative determination of IgG antibodies against complement factor H in human serum [microtiter plate coated with complement factor H] | 48 (41 + C) 105 min / 100 µL of 1:100 dil. |

Rheumatology

Anti-Phospholipid Syndrome

| REF | PRODUCT | DESCRIPTION | DETERMINATIONS |
|------|--------------------------|---|--|
| 4014 | Anti-Cardiolipin Screen | semi-quantitative determination of IgG, IgM and IgA antibodies (screening) against cardiolipin in human serum [microtiter plate coated with cardiolipin and β2GP I] | 96 (93 + C) 105 min / 100 µL of 1:100 dil. |
| 4016 | Anti-Cardiolipin | quantitative determination of IgG or IgM antibodies against cardiolipin in human serum [microtiter plate coated with cardiolipin and β2GP I] | 96 (89 + C) 105 min / 100 µL of 1:100 dil. |
| 4036 | Anti-β2-GP-I Screen | semi-quantitative determination of IgG, IgM and IgA antibodies (screening) against β2-glycoprotein I in human serum [microtiter plate coated with β2GP I] | 96 (93 + C) 105 min / 100 µL of 1:100 dil. |
| 4041 | Anti-β2-GP-I | quantitative determination of IgG or IgM antibodies against β2-glycoprotein I in human serum [microtiter plate coated with β2GP I] | 96 (89 + C) 105 min / 100 µL of 1:100 dil. |
| 4050 | Anti-Phospholipid screen | quantitative determination of IgG or IgM antibodies against phospholipids (cardiolipin, phosphatidyl-serine, -inositol, -ethanolamine, phosphatidic acid) in human serum [microtiter plate coated with β2GP I, cardiolipin, phosphatidyl-serine, -inositol, -ethanolamine and phosphatidic acid] | 96 (89 + C) 105 min / 100 µL of 1:100 dil. |

| | | | |
|------|------------------------|--|---|
| 4056 | Anti-Phosphatidylserin | quantitative determination of IgG or IgM antibodies against phosphatidylserine in human serum [microtiter plate coated with phosphatidylserine and β 2GP I] | 96 (89 + C) 105 min / 100 μ L of 1:100 dil. |
|------|------------------------|--|---|

Connective Tissue Diseases

| REF | PRODUCT | DESCRIPTION | DETERMINATIONS |
|------|-----------------|---|---|
| 4010 | ANAscreen | semi-quantitative simultaneous determination of IgG antibodies against nuclear and cytoplasmic antigens in human serum [microtiter plate with HeLa cell nuclei and nuclear antigens] | 96 (93 + C) 105 min / 100 μ L of 1:100 dil. |
| 4012 | ANApr | semi-quantitative separate determination of IgG antibodies against nuclear and cytoplasmic antigens in human serum [microtiter plate coated with ds-DNA, RNP (68kDa, A, C), Sm, SS-A/Ro60, SS-B, Scl-70, CENP-B, Jo-1] | 12 x 8 (10 + C) 105 min / 100 μ L of 1:100 dil. |
| 5032 | ANAscreen quant | quantitative determination of IgG antibodies against nuclear and cytoplasmic antigens in human serum [microtiter plate with HeLa cell nuclei and nuclear antigens] | 96 (90 + C) 105 min / 100 μ L of 1:100 dil. |

Rheumatoid and Juvenile Arthritis

| REF | PRODUCT | DESCRIPTION | DETERMINATIONS |
|----------------|----------|---|---|
| 3665 | Anti-CCP | quantitative determination of IgG antibodies against cyclic citrullinated peptides (CCP) in human serum [microtiter plate coated with CCP antigens] | 96 (89 + C) 105 min / 100 μ L of 1:100 dil. |
| 4027 4027-5 | RF IgA | quantitative determination of IgA antibodies against Fc region of IgG (rheumatoid factor, RF) in human serum [microtiter plate coated with rabbit IgG] | 96 (89 + C) 5 x (89 + C) 105 min / 100 μ L of 1:100 dil. |
| 4085 | RF IgG | quantitative determination of IgG antibodies against Fc region of IgG (rheumatoid factor, RF) in human serum [microtiter plate coated with rabbit IgG] | 96 (89 + C) 105 min / 100 μ L of 1:100 dil. |
| 4046 4046-5 | RF IgM | quantitative determination of IgM antibodies against Fc region of IgG (rheumatoid factor, RF) in human serum [microtiter plate coated with rabbit IgG] | 96 (89 + C) 5 x (89 + C) 105 min / 100 μ L of 1:100 dil. |

Systemic Lupus Erythematosus

| REF | PRODUCT | DESCRIPTION | DETERMINATIONS |
|------|------------|--|---|
| 4015 | Anti-dsDNA | quantitative determination of IgG antibodies against double-stranded deoxyribonucleic acid (dsDNA) in human serum [microtiter plate coated with purified dsDNA] | 96 (89 + C) 105 min / 100 μ L of 1:100 dil. |

ELISA

LINE & Dot

RIA

IFA

Rapid Test

IFA Automation

Blot Automation

Blot Software

| REF | PRODUCT | DESCRIPTION | DETERMINATIONS |
|------|-------------|--|--|
| 4058 | Anti-MPO | quantitative determination of IgG antibodies against myeloperoxidase (MPO) in human serum [microtiter plate coated myeloperoxidase (MPO)] | 96 (89 + C) 105 min / 100 µL of 1:100 dil. |
| 4259 | Anti-PR3 hs | quantitative determination of IgG antibodies against proteinase 3 (PR3) in human serum [microtiter plate coated with proteinase 3 (PR3)] | 96 (89 + C) 105 min / 100 µL of 1:100 dil. |

LINE & Dot

Automated assays for DotDiver2.0



Gastroenterology

| REF | PRODUCT | DESCRIPTION | DETERMINATIONS |
|------|---------------------|--|---|
| 5014 | DotDiver CeliAK IgA | determination of IgA antibodies against deamidated gliadin (DG) and tissue transglutaminase (tTG) in human serum [membrane coated with above mentioned antigens] | 24 x 2 64 min / 10 µL DotDiver2.0 |
| 5015 | DotDiver CeliAK IgG | determination of IgG antibodies against deamidated gliadin (DG) and tissue transglutaminase (tTG) in human serum [membrane coated with above mentioned antigens] | 24 x 2 64 min / 10 µL DotDiver2.0 |
| 5019 | DotDiver BiermAK | determination of IgG antibodies against intrinsic factor and parietal cell antigen in human serum [membrane coated with intrinsic factor and H ⁺ /K ⁺ ATPase] | 24 x 2 64 min / 10 µL DotDiver2.0 |

Hepatology

| REF | PRODUCT | DESCRIPTION | DETERMINATIONS |
|------|-----------------------|--|--|
| 5021 | DotDiver HepAK 7 plus | determination of IgG antibodies against M2, LKM1, LC1, SLA, F-actin, gp210 and sp100 in human serum [membrane coated with above mentioned antigens] | 24 x 7 64 min / 10 µL DotDiver2.0 |
| 5070 | DotDiver HepAK 10 | determination of IgG antibodies against M2/nPDC, M2/OGDC-E2, M2/BCOADC-E2, M2/PDC-E2, gp210, sp100, LKM1, LC1, SLA and F-actin in human serum [membrane coated with above mentioned antigens] | 24 x 10 64 min / 10 µL DotDiver2.0 |

ELISA

LINE & Dot

RIA

IFA

Rapid Test

IFA Automation

Biot Automation

Biot Software

Neurology

ELISA

LINE & Dot

RIA

IFA

| REF | PRODUCT | DESCRIPTION | DETERMINATIONS |
|-------|---|--|--|
| 50301 | DotDiver Anti- Gangliosid screen | determination of IgG/IgM antibodies against gangliosides in human serum [membrane coated with sulfatides, GM1, GM2, GM3, GM4, GD1a, GD1b, GD2, GD3, GT1a, GT1b, and GQ1b] | 24 x 12 96 min / 10 µL DotDiver2.0 |
| 50381 | DotDiver Anti- Gangliosid IgG | determination of IgG antibodies against gangliosides in human serum [membrane coated with sulfatides, GM1, GM2, GM3, GM4, GD1a, GD1b, GD2, GD3, GT1a, GT1b, and GQ1b] | 24 x 12 96 min / 10 µL DotDiver2.0 |
| 50391 | DotDiver Anti- Gangliosid IgM | determination of IgM antibodies against gangliosides in human serum [membrane coated with sulfatides, GM1, GM2, GM3, GM4, GD1a, GD1b, GD2, GD3, GT1a, GT1b, and GQ1b] | 24 x 12 96 min / 10 µL DotDiver2.0 |

Rheumatology

Rapid Test

IFA Automation

Blot Automation


Blot Software

Anti-Phospholipid Syndrome

| REF | PRODUCT | DESCRIPTION | DETERMINATIONS |
|-------|--|--|---|
| 50401 | DotDiver Anti- Phospholipid IgG | determination of IgG antibodies against phospholipids and serum proteins in human serum [membrane coated with cardiolipin, phosphatidic acid, phosphatidyl-ethanolamine, -glycerol, -inositol, -serine, annexin V, β2GP I, prothrombin] | 24 x 9 66 min / 30 µL DotDiver2.0 |
| 50411 | DotDiver Anti- Phospholipid IgM | determination of IgM antibodies against phospholipids and serum proteins in human serum [membrane coated with cardiolipin, phosphatidic acid, phosphatidyl-ethanolamine, -glycerol, -inositol, -serine, annexin V, β2GP I, prothrombin] | 24 x 9 66 min / 30 µL DotDiver2.0 |

Connective Tissue Diseases

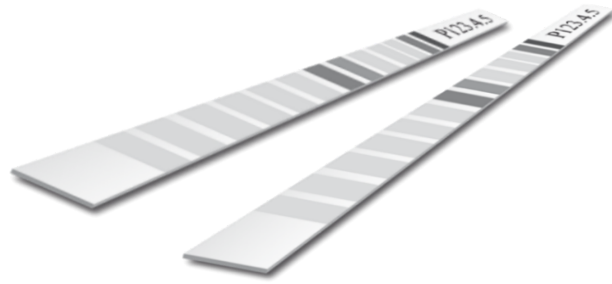
| REF | PRODUCT | DESCRIPTION | DETERMINATIONS |
|------|-------------------|---|---|
| 5016 | DotDiver ANA | determination of IgG antibodies against nuclear and cytoplasmic antigens in human serum [membrane coated with Sm, Sm/RNP, SS-A, SS-B, Jo-1, Scl-70, PM-Scl-100 and CENP-A/B] | 24 x 8 64 min / 10 µL DotDiver2.0 |
| 5017 | DotDiver PmScl | determination of IgG antibodies against nuclear and cytoplasmic antigens in human serum [membrane coated with Jo-1, PL-7, PL-12, SRP, PMScl, Ku, Mi-2, Scl-70] | 24 x 8 64 min / 10 µL DotDiver2.0 |

| | | | |
|--|-------------------------------|--|--|
| 5020 | DotDiver Quantrix ANA | determination of IgG antibodies against nuclear and cytoplasmic antigens in human serum [membrane coated with nucleosome, dsDNA, histones, Sm, RNP (68kD/A/C), Sm/RNP, SSA/Ro 60kD, SSA/Ro 52kD, SSB, Scl-70, Ku, PM-Scl 100, Mi-2, Jo-1, PL-7, PL-12, SRP, ribosomes, CENP-A/B, PCNA, sp100, gp210, M2 recombinant, M2/nPDC and F-actin] | 24 x 25 64 min / 10 µL DotDiver2.0 |
| 5035 | DotDiver ANA PCNA | determination of IgG antibodies against nuclear and cytoplasmic antigens in human serum [membrane coated with Sm, RNP, Sm/RNP, SS-A, SS-B, Jo-1, Scl-70, PM-Scl, Ku, CENP-A/B, PCNA and ribosome P0] | 24 x 12 64 min / 10 µL DotDiver2.0 |
| 5045 | DotDiver PmScl 12 | determination of IgG antibodies against nuclear and cytoplasmic antigens in human serum [membrane coated with Jo-1, PL-7, PL-12, EJ, SRP-54, Mi-2, MDA-5, TIF1-γ, Ku, PM-Scl 100, Scl-70 and SSA/Ro52] | 24 x 12 64 min / 10 µL DotDiver2.0 |
| 5066 | DotDiver ANAcyto 10 | determination of IgG antibodies against Jo-1, PL-7, PL-12, EJ, OJ, KS, ZO, HA, SRP and P0 in human serum [membrane coated with above mentioned antigens] | 24 x 10 64 min / 10 µL DotDiver2.0 |
| 5069 | DotDiver Scleroderma 10 | determination of IgG antibodies against Scl-70, CENP-A, CENP-B, PM/Scl-100, PM/Scl-75, Ku, RNA polymerase III, RNP (68kD/A/C), fibrillarin and Th/To in human serum [membrane coated with above mentioned antigens] | 24 x 10 64 min / 10 µL DotDiver2.0 |
| 5093 | DotDiver Myositis 12 | determination of IgG antibodies against Jo-1, PL-7, PL-12, EJ, SRP, Mi-2, MDA-5, TIF1-γ, SSA/Ro52kD, SAE1, SAE2 and NXP-2 in human serum [membrane coated with above mentioned antigens] | 24 x 12 64 min / 10 µL DotDiver2.0 |
|  5291 | DotDiver ANA 18 | determination of IgG antibodies against nuclear and cytoplasmic antigens in human serum [membrane coated with dsDNA, Nucleosome, Sm, Sm/RNP, ribosomal P0, Histone, RNP (A, C, 68 kDa), SS-A/Ro60, SS-A/Ro52, SS-B, Scl-70, PM/Scl-100, CENP-A/B, PCNA, Jo-1, M2, DFS-70 and F-actin] | 24 x 18 64 min / 10 µL DotDiver2.0 |

Vasculitis

| REF | PRODUCT | DESCRIPTION | DETERMINATIONS |
|------|------------------|--|---|
| 5018 | DotDiver ANCA | determination of IgG antibodies against myeloperoxidase (MPO), proteinase 3 (PR3) and glomerular basement membrane protein (GBM) in human serum [membrane coated with above mentioned antigens] | 24 x 3 64 min / 10 µL DotDiver2.0 |

Manual Assays



Gastroenterology

| REF | PRODUCT | DESCRIPTION | DETERMINATIONS |
|------|-----------------|--|--------------------------|
| 4202 | CeliAK IgG LINE | determination of IgG antibodies against deamidated gliadin (DG) and tissue transglutaminase (tTG) in human serum [membrane coated with above mentioned antigens] | 20 x 2 75 min / 10 µL |
| 4208 | CeliAK IgA LINE | determination of IgA antibodies against deamidated gliadin (DG) and tissue transglutaminase (tTG) in human serum [membrane coated with above mentioned antigens] | 20 x 2 75 min / 10 µL |
| 4220 | BiermAK LINE | determination of IgG antibodies against intrinsic factor and parietal cell antigen in human serum [membrane coated with intrinsic factor and H ⁺ /K ⁺ ATPase] | 20 x 2 75 min / 20 µL |

Hepatology

| REF | PRODUCT | DESCRIPTION | DETERMINATIONS |
|------|-----------------------------|--|--------------------------|
| 4030 | HepAK ^{plus} Dot | determination of IgG antibodies against M2, LKM1, LC1, SLA, and F-actin in human serum [membrane coated with above mentioned antigens] | 24 x 5 80 min / 10 µL |
| 4099 | HepAK 7 ^{plus} Dot | determination of IgG antibodies against M2, LKM1, LC1, SLA, F-actin, gp210 and sp100 in human serum [membrane coated with above mentioned antigens] | 24 x 7 80 min / 10 µL |

Neurology


| REF | PRODUCT | DESCRIPTION | DETERMINATIONS |
|------|---------------------|--|--|
| 5003 | Anti-Gangliosid Dot | determination of IgG or IgM antibodies against gangliosides in human serum [membranes coated with GM1, GM2, GM3, GM4, GD1a, GD1b, GD2, GD3, GT1a, GT1b, GQ1b, sulfatides] | 20 x 12 120 + 60 min (4°C) + 10 min (RT) / 10 µL |

Rheumatology

Anti-Phospholipid Syndrome

| REF | PRODUCT | DESCRIPTION | DETERMINATIONS |
|------|--------------------------|--|---------------------------|
| 5012 | Anti-Phospholipid 10 Dot | determination of IgG- or IgM antibodies against phospholipids and serum proteins in human serum [membrane coated with cardiolipin, phosphatidic acid, phosphatidyl-choline, -ethanolamine, -glycerol, -inositol, -serine, annexin V, β2GP I, prothrombin] | 20 x 10 55 min / 30 µL |

Connective Tissue Diseases

| REF | PRODUCT | DESCRIPTION | DETERMINATIONS |
|---|----------------------------|--|---------------------------|
| 4049 | PmScI ^{plus} Dot | determination of IgG antibodies against nuclear and cytoplasmic antigens in human serum [membrane coated with Jo-1, PL-7, PL-12, SRP, PMScl, Ku, Mi-2, Scl-70] | 24 x 8 80 min / 10 µL |
| 4074 | ANAscI ^{plus} Dot | determination of IgG antibodies against nuclear and cytoplasmic antigens in human serum [membrane coated with Sm, Sm/RNP, SS-A, SS-B, PMScl, Ku, Jo-1, CENP-A/B, PCNA, Scl-70] | 24 x 10 80 min / 10 µL |
| 4289 | ANA 12 LINE | determination of IgG antibodies against nuclear and cytoplasmic antigens in human serum [membrane coated with dsDNA, nucleosome, histones, Sm, SS-A/Ro 60, SS-A/Ro 52, SS-B, P0, RNP (68 kD, A, C), Jo-1, Scl-70, CENP-B] | 20 x 12 75 min / 20 µL |
|  4291 | ANA 18 LINE | determination of IgG antibodies against nuclear and cytoplasmic antigens in human serum [membrane coated with dsDNA, nucleosome, Sm, Sm/RNP, P0, histone, RNP (68 kD, A, C), SS-A/Ro60, SS-A/Ro 52, SS-B, Scl-70, PMScl, CENP-A/B, PCNA, Jo-1, M2, f-Actin, DFS-70] | 20 x 18 75 min / 10 µL |

Vasculitis

| REF | PRODUCT | DESCRIPTION | DETERMINATIONS |
|------|----------|--|--------------------------|
| 4028 | ANCA Dot | determination of IgG antibodies against Myeloperoxidase (MPO), Proteinase 3 (PR3) and Glomerular Basement Membrane protein (GBM) in human serum [membrane coated with above mentioned antigens] | 24 x 3 80 min / 10 µL |

ELISA

LINE & Dot

RIA

IFA

Rapid Test

IFA Automation

Blot Automation

Blot Software

RIA



Endocrinology

| REF | PRODUCT | DESCRIPTION | DETERMINATIONS |
|------|-----------------------------|--|---|
| 1450 | SELco® TSH rapid | quantitative determination of thyrotropin (TSH) in human serum [biotinylated and 125-iodine-anti-hTSH] | 100 (91 + C) 30 min / 100 µL |
| 1652 | SELco® FT3 | quantitative determination of free triiodothyronine (FT3) in human serum [tubes coated with T3 protein / tracer (125-iodine-anti-T3)] | 100 (92 + C) 60 min / 100 µL |
| 1881 | SELco® FT4 | quantitative determination of free thyroxine (FT4) in human serum [tubes coated with T4 protein / tracer (125-iodine-anti-T4)] | 100 (92 + C) 60 min / 50 µL |
| 2035 | CentAK® IAA M | quantitative determination of antibodies against insulin (IAA) in human serum [125-iodine-insulin (human) / protein A] | 100 (93 + C) Overnight + 60 min / 20 µL |
| 2042 | SELco® TRAb human 1 step | quantitative determination of TSH receptor antibodies (TRAb) in human serum [tubes coated with TSH receptor (human) / tracer (125-iodine-aTSHR)] | 100 (94 + C) 120 min / 100 µL |
| 2050 | CentAK® anti-IA2 M | quantitative determination of antibodies against protein tyrosine phosphatase IA2 (IA2 Ab) in human serum [125-iodine-IA2 (human, recombinant) / protein A] | 50 (43 + C) Overnight + 60 min / 20 µL |
| 2150 | CentAK® anti-IA2 M | quantitative determination of antibodies against protein tyrosine phosphatase IA2 (IA2 Ab) in human serum [125-iodine-IA2 (human, recombinant) / protein A] | 100 (93 + C) Overnight + 60 min / 20 µL |

| REF | PRODUCT | DESCRIPTION | DETERMINATIONS |
|------|--|--|--|
| 2050 | CentAK® anti-IA2 M | quantitative determination of antibodies against protein tyrosine phosphatase IA2 (IA2 Ab) in human serum [125-iodine-IA2 (human, recombinant) / protein A] | 50 (43 + C) Overnight + 60 min / 20 µL |
| 2150 | CentAK® anti-IA2 M | quantitative determination of antibodies against protein tyrosine phosphatase IA2 (IA2 Ab) in human serum [125-iodine-IA2 (human, recombinant) / protein A] | 100 (93 + C) Overnight + 60 min / 20 µL |
| 2070 | CentAK® anti-GAD₆₅ M | quantitative determination of antibodies against glutamic acid decarboxylase (GAD65 Ab) in human serum [125-iodine-GAD65 (human, recombinant) / protein A] | 100 (42 + C) 180 min / 20 µL |
| 2071 | CentAK® anti-GAD₆₅ M | quantitative determination of antibodies against glutamic acid decarboxylase (GAD65 Ab) in human serum [125-iodine-GAD65 (human, recombinant) / protein A] | 50 (92 + C) 180 min / 20 µL |
| 2080 | SELco® anti-TPO human | quantitative determination of antibodies against thyroid peroxidase (TPO Ab) in human serum [tubes coated with anti-TPO / tracer (125-iodine-hTPO)] | 100 (92 + C) 120 min / 10 µL |
| 2085 | SELco® anti-Tg human | quantitative determination of antibodies against thyroglobulin (Tg Ab) in human serum [tubes coated with anti-hTg / tracer (125-iodine-hTg)] | 100 (92 + C) 120 min / 100 µL |

Tumor Markers

| REF | PRODUCT | DESCRIPTION | DETERMINATIONS |
|---------|---|---|------------------------------------|
| RK51-CT | hTG [I-125] IRMA KIT [100] | quantitative determination of thyroglobulin (Tg) in human serum [biotinylated and 125-iodine-anti-hTg] | 100 (92 + C) Overnight / 100 µL |
| RK83-CT | hCalcitonin [I-125] IRMA KIT [100] | quantitative determination of calcitonin (hCT) in human serum [biotinylated and 125-iodine-anti-hCT] | 100 (92 + C) 18-24h / 100 µL |

ELISA

LINE & Dot

RIA

IFA

Rapid Test

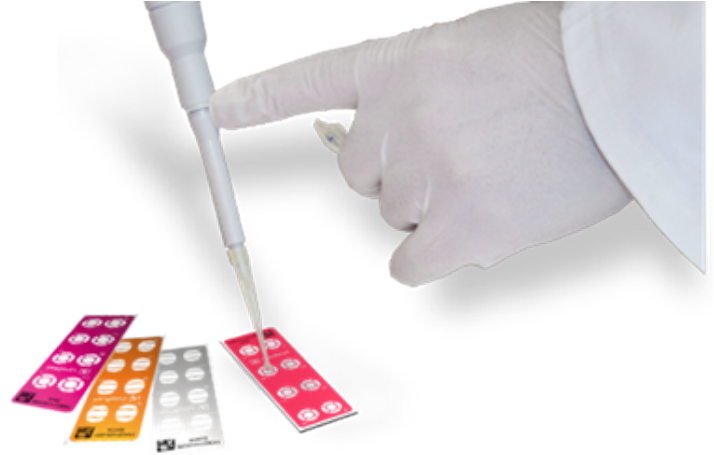
IFA Automation

Blot Automation

Blot Software

IFA

Manual Assays



Dermatology

| REF | PRODUCT | DESCRIPTION | DETERMINATIONS |
|-------|---------|--|-----------------------|
| 86148 | ASA IFA | determination of IgG antibodies against skin antigens (ASA) in human serum [slides with monkey tissue sections (esophagus)] | 48 (12 x 4) 60 min |

Gastroenterology

| REF | PRODUCT | DESCRIPTION | DETERMINATIONS |
|-------|---------------------|--|-----------------------|
| 8064 | CytoBead® CeliAK | determination of IgA or IgG antibodies against endomysium (EmA), transglutaminase 2 and deamidated gliadin as well for the control of total IgA antibodies in human serum [slides with monkey tissue sections (esophagus) and beads coated with tTG, deamidated gliadin and anti-IgA] | 48 (6 x 8) 60 min |
| 85848 | ICA IFA | determination of IgG antibodies against islet cells (ICA) in human serum [slides with monkey tissue sections (pancreas)] | 48 (12 x 4) 60 min |
| 86048 | EmA IFA | determination of IgA antibodies against endomysium (EmA) in human serum [slides with monkey tissue sections (esophagus)] | 48 (12 x 4) 60 min |
| 86096 | EmA IFA | determination of IgA antibodies against endomysium (EmA) in human serum [slides with monkey tissue sections (esophagus)] | 96 (12 x 4) 60 min |

Hepatology

| REF | PRODUCT | DESCRIPTION | DETERMINATIONS |
|-------|------------|---|-----------------------|
| 83048 | AMA IFA | determination of anti-mitochondrial antibodies (AMA) in human serum [slides with rat tissue sections (kidney)] | 48 (12 x 4) 60 min |
| 84048 | ASMA IFA | determination of antibodies to the smooth muscle (ASMA) in human serum [slides with rat tissue sections (stomach)] | 48 (12 x 4) 60 min |
| 85048 | Triple IFA | determination of IgG antibodies in human serum [slides with rat tissue sections (liver / stomach / kidney)] | 48 (12 x 4) 60 min |
| 85096 | Triple IFA | determination of IgG antibodies in human serum [slides with rat tissue sections (liver / stomach / kidney)] | 96 (12 x 8) 60 min |

Neurology

| REF | PRODUCT | DESCRIPTION | DETERMINATIONS |
|------|---------------|--|-----------------------|
| 8049 | Anti-MuSK IFA | determination of antibodies against muscle specific tyrosine kinase (MuSK) [slides with transfected (HEp-2 MuSK) and untransfected (HEp-2) cells] | 60 (10 x 6) 60 min |

Rheumatology

Connective Tissue Diseases

| REF | PRODUCT | DESCRIPTION | DETERMINATIONS |
|-------|-----------------|--|-------------------------|
| 8065 | CytoBead® ANA | determination of IgG antibodies against nuclear and cytoplasmic antigens in human serum [slides with HEp-2 cells and beads coated with dsDNA, Scl-70, SS-A/Ro60, SS-A/Ro52, SS-B, CENP-B, Sm, Sm/RNP] | 80 (10 x 8) 60 min |
| 8220 | CytoBead® ANA 2 | determination of IgG antibodies against nuclear and cytoplasmic antigens in human serum [slides with HEp-2 cells and beads coated with dsDNA, Scl-70, SS-A/ Ro60, SS-A/Ro52, SS-B, Jo-1, Sm, Sm/RNP] | 80 (10 x 8) 60 min |
| 8101 | ANA HEp-2 plus | determination of IgG antibodies against nuclear and cytoplasmic antigens in human serum [slides with HEp-2 cells] | 120 (10 x 12) 60 min |
| 81040 | ANA HEp-2 plus | determination of IgG antibodies against nuclear and cytoplasmic antigens in human serum [slides with HEp-2 cells] | 480 (40 x 12) 60 min |

ELISA

LINE & Dot

RIA

IFA

Rapid Test

IFA Automation

Blot Automation

Blot Software

ELISA

LINE & Dot

RIA

IFA

Rapid Test

IFA Automation

Blot Automation

Blot Software

| REF | PRODUCT | DESCRIPTION | DETERMINATIONS |
|-------|---------------|--|-------------------------|
| 81050 | nDNA IFA plus | determination of IgG antibodies against native DNA in human serum [slides with <i>Crithidia luciliae</i> cells] | 60 (10 x 6) 60 min |
| 81100 | nDNA IFA plus | determination of IgG antibodies against native DNA in human serum [slides with <i>Crithidia luciliae</i> cells] | 120 (10 x 12) 60 min |

Vasculitis

| REF | PRODUCT | DESCRIPTION | DETERMINATIONS |
|-------|----------------|---|-------------------------|
| 8063 | CytoBead® ANCA | determination of IgG antibodies against neutrophil cytoplasmic antigens (ANCA) and glomerular basement membrane (GBM) in human serum [slides with human granulocytes (ethanol fixed) and beads coated with PR3, MPO and GBM] | 48 (6 x 8) 60 min |
| 86448 | Anti-GBM IFA | determination of IgG antibodies against the glomerular basal membrane (GBM) in human serum [slides with monkey tissue sections (kidney)] | 48 (12 x 4) 60 min |
| 87061 | cANCA IFA plus | determination of IgG antibodies against neutrophil cytoplasmic antigens (ANCA) in human serum [slides with human granulocytes, ethanol fixed] | 60 (10 x 6) 60 min |
| 87161 | pANCA IFA plus | determination of IgG antibodies against neutrophil cytoplasmic antigens (ANCA) in human serum [slides with human granulocytes, formalin fixed] | 60 (10 x 6) 60 min |
| 87261 | ANCA IFA dual | determination of IgG antibodies against neutrophil cytoplasmic antigens (ANCA) in human serum [slides with human granulocytes, ethanol fixed as well as formalin fixed] | 120 (10 x 12) 60 min |

Automated Assays



ELISA

LINE & Dot

RIA

IFA

Rapid Test

IFA Automation

Blot Automation

Blot Software

Dermatology

| REF | PRODUCT | DESCRIPTION | DETERMINATIONS |
|------|-----------------|--|-----------------------|
| 4125 | AKLIDES® ASA | determination of IgG antibodies against skin antigens (ASA) in human serum [slides with monkey tissue sections (esophagus)] | 48 (12 x 4) 60 min |

Gastroenterology

| REF | PRODUCT | DESCRIPTION | DETERMINATIONS |
|------|---------------------------------|--|-----------------------|
| 4129 | AKLIDES® ICA | determination of IgG antibodies against islet cells (ICA) in human serum [slides with monkey tissue sections (pancreas)] | 48 (12 x 4) 60 min |
| 4131 | AKLIDES® EmA | determination of IgA antibodies against endomysium (EmA) in human serum [slides with monkey tissue sections (esophagus)] | 48 (12 x 4) 60 min |
| 4132 | AKLIDES® EmA | determination of IgA antibodies against endomysium (EmA) in human serum [slides with monkey tissue sections (esophagus)] | 96 (12 x 8) 60 min |
| 4271 | AKLIDES® CytoBead® CeliAK | determination of IgA or IgG antibodies against endomysium (EmA), transglutaminase 2 and deamidated gliadin as well for the control of total IgA antibodies in human serum [slides with monkey tissue sections (esophagus) and beads coated with tTG, deamidated gliadin and anti-IgA] | 48 (6 x 8) 60 min |

Hepatology

| REF | PRODUCT | DESCRIPTION | DETERMINATIONS |
|------|--------------------|--|-----------------------|
| 4117 | AKLIDES® AMA | determination of anti-mitochondrial antibodies (AMA) in human serum [slides with rat tissue sections (kidney)] | 48 (12 x 4) 60 min |
| 4119 | AKLIDES® ASMA | determination of IgG antibodies against the smooth muscle (ASMA) in human serum [slides with rat tissue sections (stomach)] | 48 (12 x 4) 60 min |
| 4121 | AKLIDES® Triple | determination of IgG antibodies in human serum [slides with rat tissue sections (liver / stomach / kidney)] | 48 (12 x 4) 60 min |
| 4122 | AKLIDES® Triple | determination of IgG antibodies in human serum [slides with rat tissue sections (liver / stomach / kidney)] | 96 (12 x 8) 60 min |

Nephrology

| REF | PRODUCT | DESCRIPTION | DETERMINATIONS |
|------|----------------------|--|-----------------------|
| 4123 | AKLIDES® Anti-GBM | determination of IgG antibodies against the glomerular basement membrane (GBM) in human serum [slides with monkey tissue sections (kidney)] | 48 (12 x 4) 60 min |

Rheumatology

Connective Tissue Diseases

| REF | PRODUCT | DESCRIPTION | DETERMINATIONS |
|------|--------------------------------|--|-------------------------|
| 4065 | AKLIDES® ANA plus | determination of IgG antibodies against nuclear (ANA) and cytoplasmic antigens in human serum [slides with HEp-2 cells] | 120 (10 x 12) 60 min |
| 4063 | AKLIDES® ANA plus | determination of IgG antibodies against nuclear (ANA) and cytoplasmic antigens in human serum [slides with HEp-2 cells] | 480 (40 x 12) 60 min |
| 4272 | AKLIDES® CytoBead® ANA | determination of IgG antibodies against nuclear and cytoplasmic antigens in human serum [slides with HEp-2 cells and beads coated with dsDNA, Scl-70, SS-A/Ro60, SS-A/Ro52, SS-B, CENP-B, Sm, Sm/RNP] | 80 (10 x 8) 60 min |
| 4277 | AKLIDES® CytoBead® ANA 2 | determination of IgG antibodies against nuclear and cytoplasmic antigens in human serum [slides with HEp-2 cells and beads coated with dsDNA, Scl-70, SS-A/Ro60, SS-A/Ro52, SS-B, Jo-1, Sm, Sm/RNP] | 80 (10 x 8) 60 min |

Systemic Lupus Erythematosus

| REF | PRODUCT | DESCRIPTION | DETERMINATIONS |
|------|------------------|---|-------------------------|
| 4282 | AKLIDES® nDNA | determination of IgG antibodies against native DNA in human serum [slides with <i>Crithidia lucilliae</i> cells] | 60 (10 x 6) 60 min |
| 4283 | AKLIDES® nDNA | determination of IgG antibodies against native DNA in human serum [slides with <i>Crithidia lucilliae</i> cells] | 120 (10 x 12) 60 min |

Vasculitis

| REF | PRODUCT | DESCRIPTION | DETERMINATIONS |
|------|-------------------------------|---|-------------------------|
| 4060 | AKLIDES® cANCA | determination of IgG antibodies against neutrophil cytoplasmic antigens (ANCA) in human serum [slides with human granulocytes, ethanol fixed] | 60 (10 x 6) 60 min |
| 4072 | AKLIDES® pANCA | determination of IgG antibodies against neutrophil cytoplasmic antigens (ANCA) in human serum [slides with human granulocytes, formalin fixed] | 60 (10 x 6) 60 min |
| 4472 | AKLIDES® ANCA dual | determination of IgG antibodies against neutrophil cytoplasmic antigens (ANCA) in human serum [slides with human granulocytes, ethanol fixed as well as formalin fixed] | 120 (10 x 12) 60 min |
| 4270 | AKLIDES® CytoBead® ANCA | determination of IgG antibodies against neutrophil cytoplasmic antigens (ANCA) and glomerular basement membrane (GBM) in human serum [slides with human granulocytes (ethanol fixed) and beads coated with PR3, MPO and GBM] | 48 (6 x 8) 60 min |

ELISA

LINE & Dot

RIA

IFA

Rapid Test

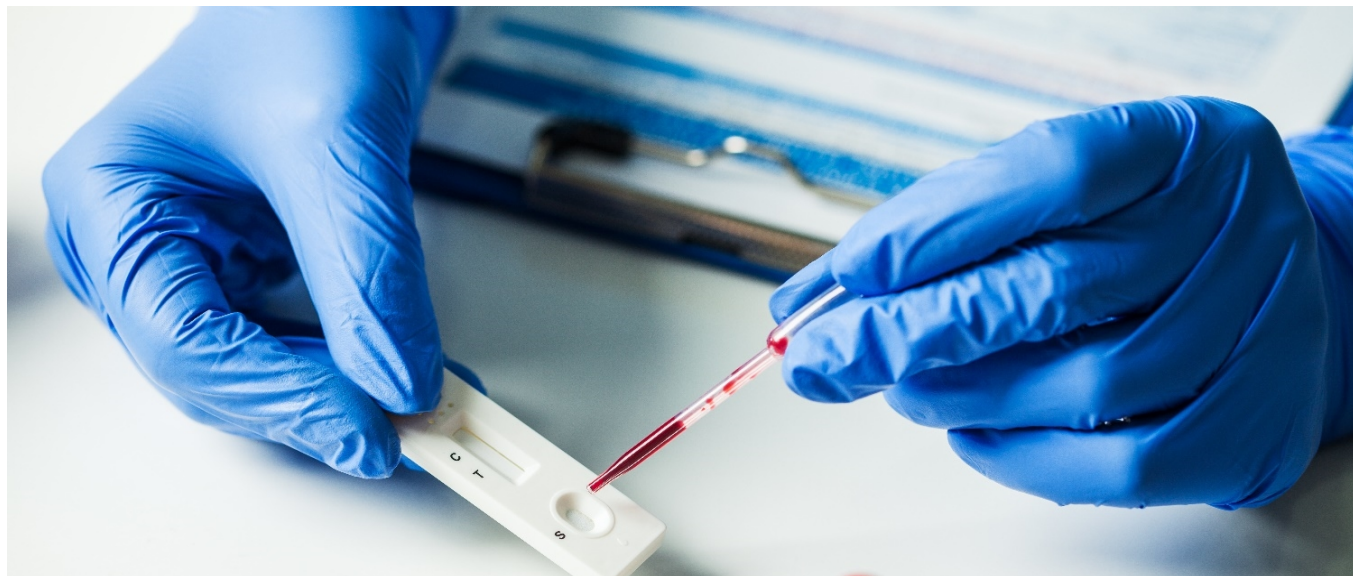
IFA Automation

Blot Automation

Blot Software

Rapid Tests

Lateral Flow



Infectiology

| REF | PRODUCT | DESCRIPTION | DETERMINATIONS |
|------|-------------------------|--|----------------|
| 6103 | Rotadeno Antigen Quick | determination of rotavirus and adenovirus antigen in fecal samples [Test strip with anti-rotavirus and anti-adenovirus antibodies] | 25 10 min |
| 6109 | Influenza Antigen Quick | determination of influenza virus type A and type B antigen in nasal and nasopharyngeal specimens (swab, wash and aspirate) [Test strip with anti-influenza A and anti-influenza B virus antibodies] | 25 10 min |

Gastroenterology

| REF | PRODUCT | DESCRIPTION | DETERMINATIONS |
|------|----------------------------|---|----------------|
| 6110 | Helicobacter Antigen Quick | determination of <i>Helicobacter pylori</i> antigen in fecal samples [Test strip with anti- <i>Helicobacter pylori</i> antibodies] | 25 5 min |
| 6118 | Calprotectin Rapid | determination of human calprotectin in stool samples [Test cassettes coated with anti-calprotectin antibodies] | 1 10 min |
| 6119 | Calprotectin Rapid | determination of human calprotectin in stool samples [Test cassettes coated with anti-calprotectin antibodies] | 10 10 min |

ELISA

LINE & Dot

RIA

IFA

Rapid Test

IFA Automation

Blot Automation

Blot Software

Latex Tests



ELISA

LINE & Dot

RIA

IFA

Rapid Test

IFA Automation

Blot Automation

Blot Software

| REF | PRODUCT | DESCRIPTION | DETERMINATIONS |
|------|-----------|---|----------------------|
| 4095 | CRP Latex | determination of C-reactive protein (CRP) in human serum [Latex particles coated with anti-CRP] | 100 2 min / 40 µL |
| 4096 | RF Latex | determination of rheumatoid factor (RF) in human serum [Latex particles coated with human IgG] | 100 2 min / 40 µL |

IFA Platform Technology

Reading System

akiron[®] NEO



akiron[®] NEO

| | |
|---------------------------------------|---|
| DEVICE REF | 4450 |
| Field of application | IFA Diagnostics |
| Description | Fully automated system for standardized immunofluorescence imaging and data processing |
| Indication of the related kits | Dermatology, Gastroenterology, Hepatology, Nephrology, Rheumatology, Connective Tissue Diseases, Systemic Lupus Erythematosus, Vasculitis |
| Size / Weight | 32 cm x 28 cm x 46 cm (L x W x H) / 15 kg |
| Illumination | 3 wavelengths LED |
| Objectives | Motorized fluorescence microscope with 20x objective |
| Filter sets | blue / green / red |
| Slide amount | Motorized x-y stage for 2 slides |
| Analysis | Pattern, intensity, end-point-titre, cell & tissue imaging |
| Parameters | ANA, ANCA, CytoBead [®] , Tissues |
| Report | Run & sample-specific report, documentation, archival storage |
| Connectivity | Pipettor and bidirectional to LIS |

ELISA

LINE & Dot

RIA

IFA

Rapid Test

IFA Automation

Blot Automation

Blot Software

Pipettor



NEW

AP16 IF ELITE

| | |
|---------------------------------------|---|
| DEVICE REF | 4370 |
| Field of application | IFA Diagnostics |
| Description | Fully automated IFA Processor for akiron® NEO and AKLIDES® |
| Indication of the related kits | Connective Tissue Diseases, Dermatology, Gastroenterology, Hepatology, Nephrology, Rheumatology, Systemic Lupus Erythematosus, Vasculitis |
| Size / Weight | 62 cm x 82 cm x 72 cm (W x D x H) / 75 kg |
| Slide capacity | 16 |
| Sample capacity | 160 |
| Barcode reader | 1D and 2D |
| Dilution positions | 264 |
| Parameters | ANA, ANCA, nDNA, CytoBead®, Tissues |
| Method | Method capacity up to 8 methods in parallel |
| Connectivity | akiron® NEO and LIS |

ELISA

LINE & Dot

RIA

IFA

Rapid Test

IFA Automation

Blot Automation

Blot Software

Blot Automation

ELISA

LINE & Dot

RIA

IFA

Rapid Test

IFA Automation

Blot Automation

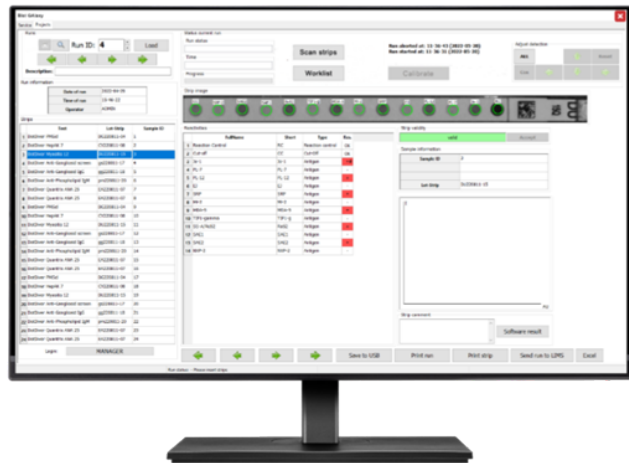
Blot Software



DotDiver2.0

| | |
|---------------------------------------|--|
| DEVICE REF | 5075 |
| Field of application | Immunoblot Diagnostics |
| Description | Compact and integrated system for automated processing and evaluation of immunoblot LINE & Dot assays |
| Indication of the related kits | Anti-Phospholipid Syndrome, Autoimmune Hepatitis, Gastroenterology, Myositis, Nephritis, Neuropathies, Scleroderma, Systemic Inflammatory Rheumatic Diseases, Vasculitis |
| Size / Weight | 34 x 42 x 36.5 cm (L x W x H) / 15 kg |
| Assay Format | Antigen-coated strips Ready-to-use reagent cartridges |
| Sample capacity | 1 - 24 samples |
| Assay time | Assay dependent |
| Report | Run & sample-specific report, documentation, archival storage |
| Connectivity | Bidirectional to LIS |

Blot Scanning Software



NEW

Blot GALaxy

| | |
|---------------------------------------|--|
| DEVICE REF | 5100 |
| Field of application | Immunoblot Diagnostics |
| Description | Evaluation and archiving software for immunoblots LINE & Dot |
| Indication of the related kits | Anti-Phospholipid Syndrome, Autoimmune Hepatitis, Gastroenterology, Myositis, Nephritis, Neuropathies, Scleroderma, Systemic Inflammatory Rheumatic Diseases, Vasculitis |
| Sample capacity | 1 - 24 samples |
| Report | Run & sample-specific report, documentation, archival storage |
| Connectivity | Bidirectional to LIS |

ELISA

LINE & Dot

RIA

IFA

Rapid Test

IFA Automation

Blot Automation

Blot Software

Index

| ABC | REF | Product Name | Page |
|-----|-------|----------------------------|------|
| A | 4450 | akiron® NEO | 26 |
| | 4117 | AKLIDES® AMA | 22 |
| | 4063 | AKLIDES® ANA plus | 22 |
| | 4065 | AKLIDES® ANA plus | 22 |
| | 4472 | AKLIDES® ANCA dual | 22 |
| | 4123 | AKLIDES® Anti-GBM | 22 |
| | 4125 | AKLIDES® ASA | 21 |
| | 4119 | AKLIDES® ASMA | 22 |
| | 4060 | AKLIDES® cANCA | 23 |
| | 4272 | AKLIDES® CytoBead® ANA | 22 |
| | 4277 | AKLIDES® CytoBead® ANA 2 | 22 |
| | 4270 | AKLIDES® CytoBead® ANCA | 23 |
| | 4271 | AKLIDES® CytoBead® CeliAK | 21 |
| | 4131 | AKLIDES® EmA | 21 |
| | 4132 | AKLIDES® EmA | 21 |
| | 4129 | AKLIDES® ICA | 21 |
| | 4282 | AKLIDES® nDNA | 23 |
| | 4283 | AKLIDES® nDNA | 23 |
| | 4072 | AKLIDES® pANCA | 23 |
| | 4121 | AKLIDES® Triple | 22 |
| | 4122 | AKLIDES® Triple | 22 |
| | 83048 | AMA IFA | 19 |
| | 4289 | ANA 12 LINE | 15 |
| | 4291 | ANA 18 LINE | 15 |
| | 8101 | ANA HEp-2 plus | 19 |
| | 81040 | ANA HEp-2 plus | 19 |
| | 4012 | ANApr | 9 |
| | 4074 | ANAscl ^{plus} Dot | 15 |
| | 4010 | ANAscreen | 9 |
| | 5032 | ANAscreen quant | 9 |
| | 4028 | ANCA Dot | 15 |
| | 87261 | ANCA IFA dual | 20 |
| | 4041 | Anti-β2-GP-I | 8 |
| | 4036 | Anti-β2-GP-I Screen | 8 |
| | 3900 | Anti-ASGPR | 8 |
| | 4016 | Anti-Cardiolipin | 8 |
| | 4014 | Anti-Cardiolipin Screen | 8 |
| | 3665 | Anti-CCP | 9 |
| | 4015 | Anti-dsDNA | 9 |
| | 4067 | Anti-Faktor H | 8 |

| ABC | REF | Product Name | Page |
|----------|-------|----------------------------------|------|
| | 5003 | Anti-Gangliosid Dot | 14 |
| | 86448 | Anti-GBM IFA | 20 |
| | 3750 | Anti-GP2 IgA | 7 |
| | 3850 | Anti-GP2 IgG | 7 |
| | 3650 | Anti-GP2 Iso 1 IgA | 7 |
| | 3610 | Anti-GPC | 7 |
| | 4044 | Anti-hu tTG IgG | 7 |
| | 4033 | Anti-huTransG | 7 |
| | 3600 | Anti-Intrinsic Factor | 7 |
| | 4053 | Anti-LKM-1 | 8 |
| | 4052 | Anti-M2 | 8 |
| | 4058 | Anti-MPO | 10 |
| | 8049 | Anti-MuSK IFA | 19 |
| | 4056 | Anti-Phosphatidyl-Serin | 9 |
| | 5012 | Anti-Phospholipid 10 Dot | 15 |
| | 4050 | Anti-Phospholipid screen | 8 |
| | 4259 | Anti-PR3 hs | 10 |
| | 4370 | AP16 IF ELITE | 27 |
| | 86148 | ASA IFA | 18 |
| | 4006 | ASCA IgA | 7 |
| | 4007 | ASCA IgG | 7 |
| | 84048 | ASMA IFA | 19 |
| B | 4220 | BierMAK LINE | 14 |
| | 5100 | Blot Galaxy | 29 |
| C | 6118 | Calprotectin Rapid | 24 |
| | 6119 | Calprotectin Rapid | 24 |
| | 87061 | cANCA IFA plus | 20 |
| | 4208 | CeliAK IgA LINE | 14 |
| | 4202 | CeliAK IgG LINE | 14 |
| | 2070 | CentAK® anti-GAD ₆₅ M | 17 |
| | 2071 | CentAK® anti-GAD ₆₅ M | 17 |
| | 2050 | CentAK® anti-IA2 M | 17 |
| | 2150 | CentAK® anti-IA2 M | 17 |
| | 2035 | CentAK® anti-IAA M | 16 |
| | 4095 | CRP Latex | 25 |
| | 8065 | CytoBead® ANA | 19 |
| | 8220 | CytoBead® ANA 2 | 19 |
| | 8063 | CytoBead® ANCA | 20 |
| | 8064 | CytoBead® CeliAK | 18 |
| D | 5075 | DotDiver2.0 | 28 |
| | 5016 | DotDiver ANA | 12 |
| | 5291 | DotDiver ANA 18 | 13 |
| | 5035 | DotDiver ANA PCNA | 13 |

| ABC | REF | Product Name | Page |
|----------|-------|---------------------------------|------|
| | 5066 | DotDiver ANAcyto 10 | 13 |
| | 5018 | DotDiver ANCA | 13 |
| | 50381 | DotDiver Anti-Gangliosid IgG | 12 |
| | 50391 | DotDiver Anti-Gangliosid IgM | 12 |
| | 50301 | DotDiver Anti-Gangliosid screen | 12 |
| | 50401 | DotDiver Anti-Phospholipid IgG | 12 |
| | 50411 | DotDiver Anti-Phospholipid IgM | 12 |
| | 5019 | DotDiver BiermAK | 11 |
| | 5014 | DotDiver CeliAK IgA | 11 |
| | 5015 | DotDiver CeliAK IgG | 11 |
| | 5070 | DotDiver HepAK 10 | 11 |
| | 5021 | DotDiver HepAK 7 plus | 11 |
| | 5093 | DotDiver Myositis 12 | 13 |
| | 5017 | DotDiver PmScl | 12 |
| | 5045 | DotDiver PmScl 12 | 13 |
| | 5020 | DotDiver Quantrix ANA | 13 |
| | 5069 | DotDiver Scleroderma 10 | 12 |
| E | 86048 | EmA IFA | 18 |
| | 86096 | EmA IFA | 18 |
| G | 3710 | GliaDea IgA | 7 |
| | 3810 | GliaDea IgG | 7 |
| H | 6110 | Helicobacter Antigen Quick | 24 |
| | 6012 | Helicobacter pylori Antigen | 7 |
| | 6013 | Helicobacter pylori Antigen | 7 |
| | 4099 | HepAK 7 ^{plus} Dot | 14 |
| | 4030 | HepAK ^{plus} Dot | 14 |
| I | 85848 | ICA IFA | 18 |
| | 6109 | Influenza Antigen Quick | 24 |
| M | 3507 | Medizym® anti-GAD M | 6 |
| | 3506 | Medizym® anti-IA2 M | 6 |
| | 3102 | Medizym® anti-Tg | 6 |
| | 3002 | Medizym® anti-TPO | 6 |
| | 3806 | Medizym® IAA | 6 |
| | 3505 | Medizym® T.R.A. human | 6 |
| N | 81050 | nDNA IFA plus | 20 |
| | 81100 | nDNA IFA plus | 20 |
| P | 87161 | pANCA IFA plus | 20 |
| | 3950 | Pancreatitis GP2 | 7 |
| | 4049 | PmScl ^{plus} Dot | 15 |
| R | 4027 | RF IgA | 9 |
| | 4085 | RF IgG | 9 |
| | 4046 | RF IgM | 9 |
| | 4096 | RF Latex | 25 |
| | 6103 | Rotadeno Antigen Quick | 24 |

| ABC | REF | Product Name | Page |
|----------|-------|--------------------------|------|
| S | 2085 | SELco® anti-Tg human | 17 |
| | 2080 | SELco® anti-TPO human | 17 |
| | 1630 | SELco® Calcitonin | 16 |
| | 1652 | SELco® FT3 | 16 |
| | 1881 | SELco® FT4 | 16 |
| | 1301 | SELco® Tg 1 step | 16 |
| | 2042 | SELco® TRAb human 1 step | 16 |
| | 1450 | SELco® TSH rapid | 16 |
| T | 85048 | Triple IFA | 19 |
| | 85096 | Triple IFA | 19 |



Your Reliable Partners for Autoimmune Diagnostics



Ludwig-Erhard-Ring 3
15827 Blankenfelde-Mahlow
OT Dahlewitz
Germany

Medipan GmbH

+49 33708 4417 - 0
+49 33708 4417 - 25
info@medipan.de
www.medipan.de

GA Generic Assays GmbH

+49 33708 9286 - 0
+49 33708 4417 - 25
info@genericassays.com
www.genericassays.com

