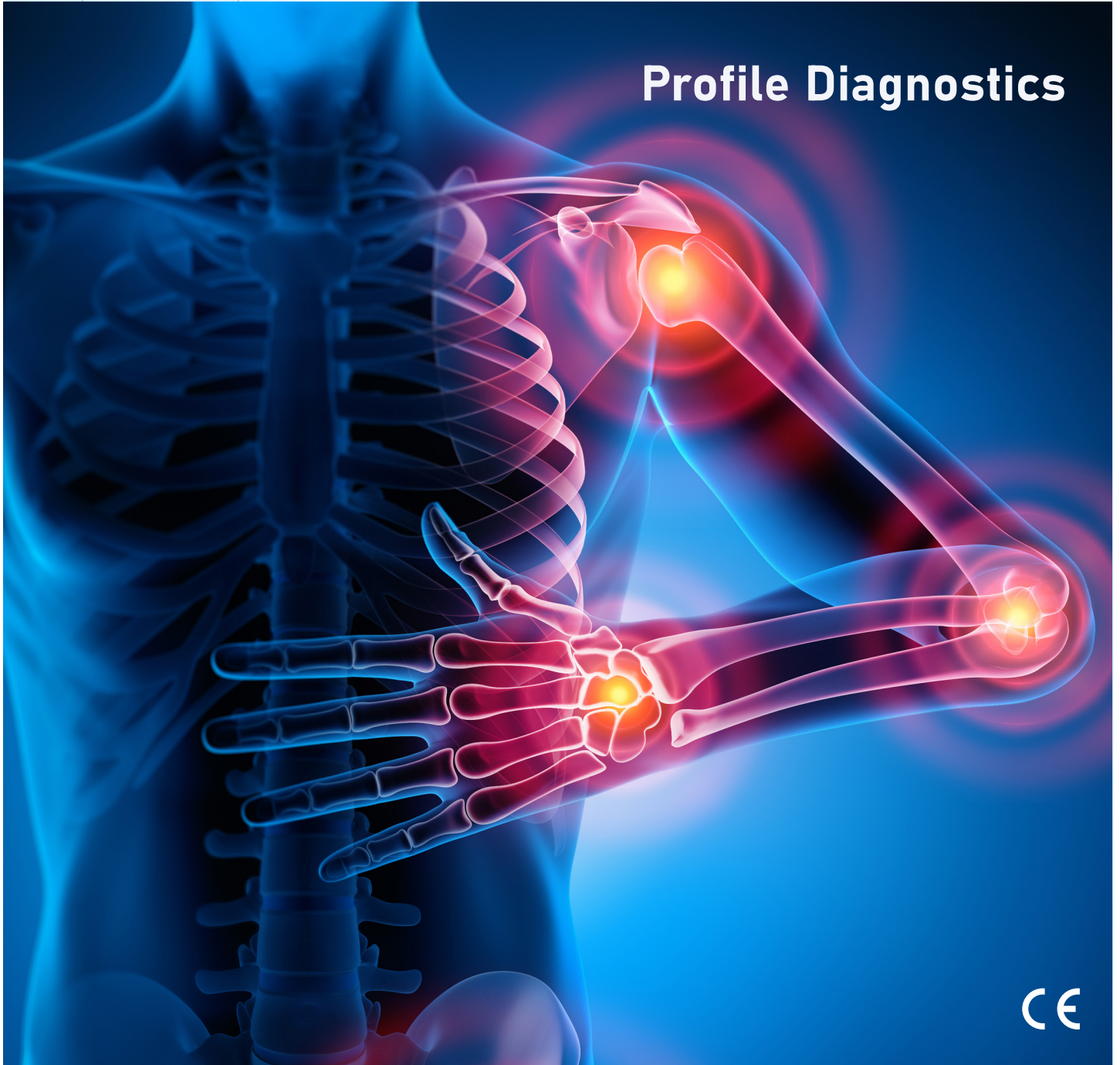


# ANA 18 Immunoblot

LINE Immunoassay for the determination of antibodies against nuclear and cytoplasmic antigens in human serum



## Profile Diagnostics



### Product Highlights

- Profile diagnostics with 18 antigens
- Serological markers for systemic autoimmune diseases
- Automated execution with the DotDiver2.0

# YOUR RELIABLE PARTNER IN AUTOIMMUNE DIAGNOSTICS

20 Years of Experience, 150 Partners in more than 100 Countries

## Nuclear and Cytoplasmic antibodies (ANA)

Significance in the diagnosis of systemic autoimmune diseases

### Autoimmune diseases

Autoimmune diseases are based on disorders of the immune system. Synthesized antibodies and auto-reactive T cells are directed against the body's own structures and lead to local or systemic inflammatory reactions. In principle, any organ or tissue can be affected by an autoimmune disease. Accordingly, hundreds of autoimmune diseases have been described to date, which can be roughly divided into three groups: Organ-specific autoimmune diseases affect individual organs. Systemic, non-organ-specific autoimmune diseases include, for example, collagenoses or other systemic inflammatory rheumatic diseases. In these cases, antibodies against nuclear or cytoplasmic antigens are often detected. In addition, various mixed forms of organ-specific and systemic autoimmune diseases have been described.

### Diagnosis

Autoimmune diseases are diagnosed on the basis of the clinical symptoms and laboratory tests. Clinical suspicion is based in particular on the detection of antibodies against nuclear or cytoplasmic antigens (ANA) as a characteristic feature of systemic autoimmune diseases such as systemic lupus erythematosus (SLE), Sjögren's syndrome, progressive systemic sclerosis (PSS), mixed connective tissue disease (MCTD), rheumatoid arthritis (RA) or dermatomyositis. Various autoimmune diseases are characterized by the presence of specific autoantibodies. The ANA 18 LINE immunoassay offers comprehensive profile diagnostics for the differential diagnosis of autoimmune diseases:

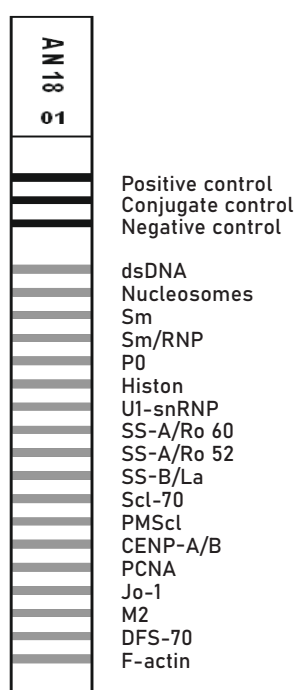
Disease	Antigens
SLE	dsDNA, nucleosomes, Sm, rib-P0, histone, PCNA
Sjögren's syndrome	SS-A/Ro60, SS-B
Scleroderma	Scl-70, CENP-B
Myositis	PM/Scl-100, Jo-1
Mixed collagenosis	Sm/RNP, U1-snRNP
Autoimmune liver diseases	M2, F-actin
Not disease-specific	SS-A/Ro52, DSF-70

# ANA 18 LINE Immunoassay

Determination of 18 antibodies in human serum

## Assay principle

### Structure of ANA 18 LINE test strips



The assay for the qualitative determination of antibodies against nuclear and cytoplasmic antigens is based on the binding of antibodies to 18 membrane-bound antigens (native purified and recombinant) via a precipitating substrate. The test is performed automatically in the DotDiver2.0 instrument and the results are determined using integrated software, or by manual processing and visual or software based evaluation (i.e. Blot GALaxy).

## Diagnostic sensitivity and specificity

The sensitivity and specificity of the immunoassay were determined by analyzing 258 samples from patients with autoimmune diseases and unselected blood donors against commercially available immunoassays from European manufacturers as reference.

	Sensitivity (%)	Specificity (%)
dsDNA	83.6	86.3
Nucleosomes	58.8	93.6
Sm	69.0	> 99
Sm/RNP	51.9	97.7
Ribosomal P0	50.0	> 99
Histones	45.8	96.2
U1 snRNP	81.1	98.7
SS-A/Ro60	94.3	98.4
SS-A/Ro52	92.8	92.8
SS-B	64.5	> 99
Scl-70	57.9	> 99
PM/Scl-100	31.6	98.0
CENP-A/B	92.9	98.9
PCNA	> 99	> 99
Jo-1	63.4	99.5
M2	73.1	98.7
DFS-70	> 99	95.8
F-actin	> 99	97.6

## Automated



# ANA Profile Diagnostic

## DotDiver2.0 Automated Immunoblot Analyzer

- Automated LINE / Dot immunoblot benchtop analyzer with small footprint
- User-friendly software
- Simultaneous performance of up to 24 different tests
- Ready-to-use reagents and test strips
- Automated barcode identification of test strips and cartridges
- Integrated drying of processed test strips
- Evaluation of processed test strips
- Export of results in digital file format or as print out
- LIS connectivity
- Low-maintenance, no liquid handling

## Manual



## ANA 18 LINE

Classic version with manual processing and visual or automated evaluation through scan software (i.e. Blot GAlaxy).

## Contact

GA Generic Assays GmbH

Ludwig-Erhard-Ring 3  
15827 Blankenfelde-Mahlow OT Dahlewitz  
Germany

Phone +49 33708 9286 0  
Fax +49 33708 4417 25

info@genericassays.com  
www.genericassays.com

## Order Information

### Automated



**DotDiver ANA 18**  
(24 x 18 Determinations)

**REF 5291**

### Manual



**ANA 18 LINE**  
(20 x 18 Determinations)

**REF 4291**