



# AKENOMI®

## Fully Automated IFA Processor



- ▶ **Handles up to 8 slides**
- ▶ **48 primary tubes and up to 248 dilution vials**
- ▶ **48 samples in less than 2 hours**
- ▶ **2 washing solutions, 4 conjugates and 8 controls**
- ▶ **Dedicated for AKLIDES® Plattformtechnology**
- ▶ **Up to 8 methods in parallel**
- ▶ **2 needles for efficient washing**
- ▶ **1D and 2D barcode readers**
- ▶ **LIMS connection**



### **MEDIPAN GMBH**

Ludwig-Erhard-Ring 3 - 15827 Dahlewitz/Berlin, Germany  
Telephone: +49 (0) 33708-44 17-0 - FAX: +49 (0) 33708-44 17-25  
info@medipan.de - www.medipan.eu



# AKENOMI®

The AKENOMI is a compact and highly flexible instrument providing cost-effective automation for IFA assays, performs all the following assay processes:

- ▶ sample pipetting
- ▶ reagent addition

- ▶ slide washing
- ▶ flexible incubation times

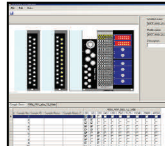
## ▶ COMPACT DESIGN

Although small, the AKENOMI boasts of an impressive capacity, helping you to maximize the use of your limited bench space. It processes batches of up to 48 samples and 8 IFA slides.



## ▶ EASY TO SET UP

The AKENOMI IFA Application Software has been designed to be easy to program. All assay parameters are entered by means of a simple spreadsheet interface with instant online help available for each parameter.



## ▶ FLEXIBLE APPLICATIONS

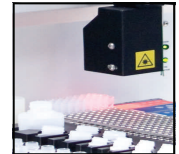
The AKENOMI software caters for a wide variety of IFA applications. "CCX-IFA", the protocol and worklist generator, enables you to define protocols combining up to 8 different IFA assays. Each assay is independently programmable, allowing you to control all liquid handling parameters.

## ▶ INFORMATIVE WORKLISTS

Having defined a protocol, routine operation simply requires you to define a worklist in which the test requests for each sample are entered. Controls can be presented to the AKENOMI either ready diluted or undiluted.

## ▶ BARCODE READER

AKENOMI has two different barcode readers, 1D to uniquely identify samples and reagents, and 2D for the slides.



## ▶ EASY TO USE

When processing a profile with multiple tests, you will be prompted as to where to start loading each type of slide. Once processing is underway, the graphical interface provides the operator with continuous information on the progress of the batch. A color display indicates whether any errors, such as insufficient samples have been encountered.

## ▶ ADVANCED FEATURES

The AKENOMI incorporates a number of advanced features to ensure the best possible performance is maintained in routine use: dual nozzle, PTFE coated probe for minimal carryover, automatic liquid tracking to minimize needle submersion, processing database to record all steps.

## ▶ RELIABLE AND ADAPTABLE

The AKENOMI is based on reliable and well proven technology. A robust design combined with its highly flexible software ensures its durability for many years to come.

## TECHNICAL SPECIFICATIONS

### Software requirements

Operating System: Windows XP (SP3) Windows 7 (32 Bit) recommended English Language version

**Minimum computer requirements** (not supplied)

Processor 1 Ghz, 2 GB RAM, Sound Card, CD ROM

**Instrument external dimensions (allowing for cover opening)**

660 mm (W) x 740 mm (D) x 825 mm (H)

### Dimensions packed

Size of crate 850 mm x 740 mm x 830 mm

Weight (packed) 65 Kg

### Weight unpacked and on bench

34 Kg

### Probe working area

X = 460 mm, Y = 270 mm

### Pumping system

Proprietary high-resolution syringe pump

Full stroke of syringe = 5000 steps

Syringe volume 1000 µl

### Precision

CV < 5 % at 5 µl

### Power requirement

110 to 240 volts, AC single phase 50 or 60 Hz

### Power consumption

200 Watts max

### Chemical compatibility of fluid path

All valves, syringes and tubing are manufactured from glass or PTFE-based materials for total chemical resistance (except HF and HF compounds).

### Sample capacity

2 x 24 (48 total)

### Dilution tube capacity

248 (1.4 ml) dilution tubes

### Slide capacity

8 Slides

### 1D + 2D barcode reader for reagents and slides

Symbologies - All common types catered for including Code 39, Interleaved 2 of 5, Code 128 etc.

Minimum bar width = 0.15 mm

Minimum white space on either side of code = 2 mm

Sample Rack for 12 mm x 75 mm tubes



Order code 4159